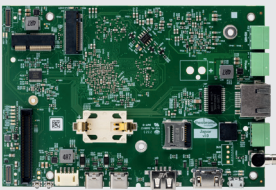


MAKING LOGISTICS ROBOTS SMART

The demands placed on manufacturing and supply chain processes are constantly increasing: more efficiency, high availability, flexibility during order peaks and safety while at the same time reducing operating costs. A computing platform optimized for mobile robots, on which state-of-the-art computer vision applications can be seamlessly integrated, enables robot manufacturers to master these challenges.

CHERRY Embedded Solutions' industrial-grade modules are designed to meet the requirements of an AMR, for example in terms of connectivity, processing power, memory, and energy efficiency:

Rockchip RK3588	GPU Mali-G610 MP4	Power consumption less than	EAL6+ certified	Operating system:
Octa-core ARM CPU	NPU (with 6 TOPS)	18W and 2,3W in idle mode	Secure Element	Linux (Debian and Yocto)



Single-Board Computer JAGUAR SBC-RK3588-AMR

- Connects up to 4 MIPI-CSI high-resolution cameras
- Connects to 2 LIDAR or ToF sensors
- Connectivity via WiFi, Bluetooth, 2 USB 3.1, 1 USB 2.0, Gigabit Ethernet and PCIe
- Extension board for various additional interfaces
- Dimensions: 135 mm x 93 mm



System-on-Module TIGER SOM-RK3588-Q7

- Provides up to 4 MIPI-CSI and 1 HDMI camera interfaces
- Supports connectivity via 3 USB 3.0 and 1 USB 2.0, Gigabit Ethernet, PCIe
- Development Kit
- Compact form factor: Q7 (70 mm x 70 mm / 2.75" x 2.75")

TYPICAL APPLICATIONS



Warehouse Automation and Manufacturing

Robots that navigate intelligently and move safely in complex, ever-changing environments where machines and people work in very close proximity find the perfect computing platform in JAGUAR and TIGER.



Outdoor Machines

Trees, steep terrain, tall buildings and steel structures pose a major challenge for the precise positioning of a robot. The use of modern AI and computer vision applications on the JAGUAR or TIGER platforms offers a safe and cost-effective solution.



THINK. DEVELOP. MANUFACTURE. THINGS!

CHERRY Embedded Solutions' modules

combine performance and cost efficiency:

- Production capacities from small batches to large-scale series
- Lead times of as little as two weeks
- Availability of up to ten years
- Seamlessly integrated software and hardware guarantee reliable operation
- The modules are supported mainline in Linux kernel and U-Boot bootloader
- Developed and manufactured in Austria, the heart of Europe

TALK TO OUR EXPERTS AND GET YOUR SAMPLE
embedded.cherry.de • sales-es@cherry.de

